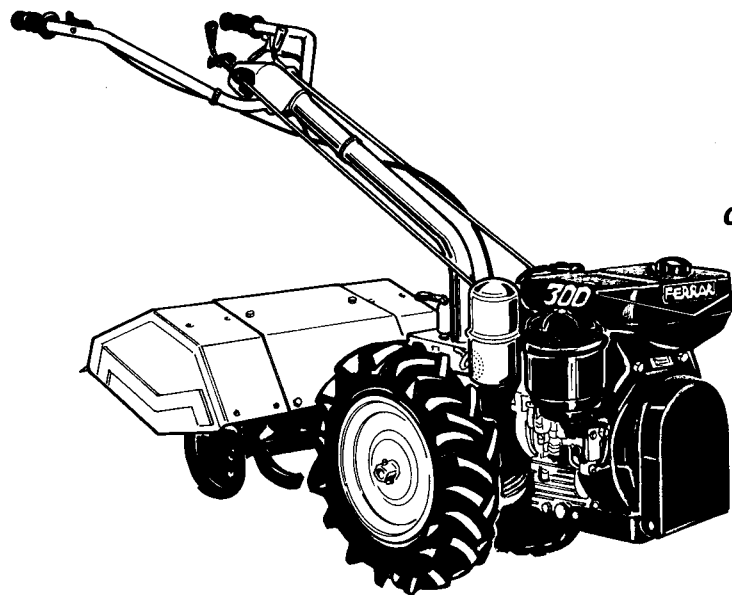


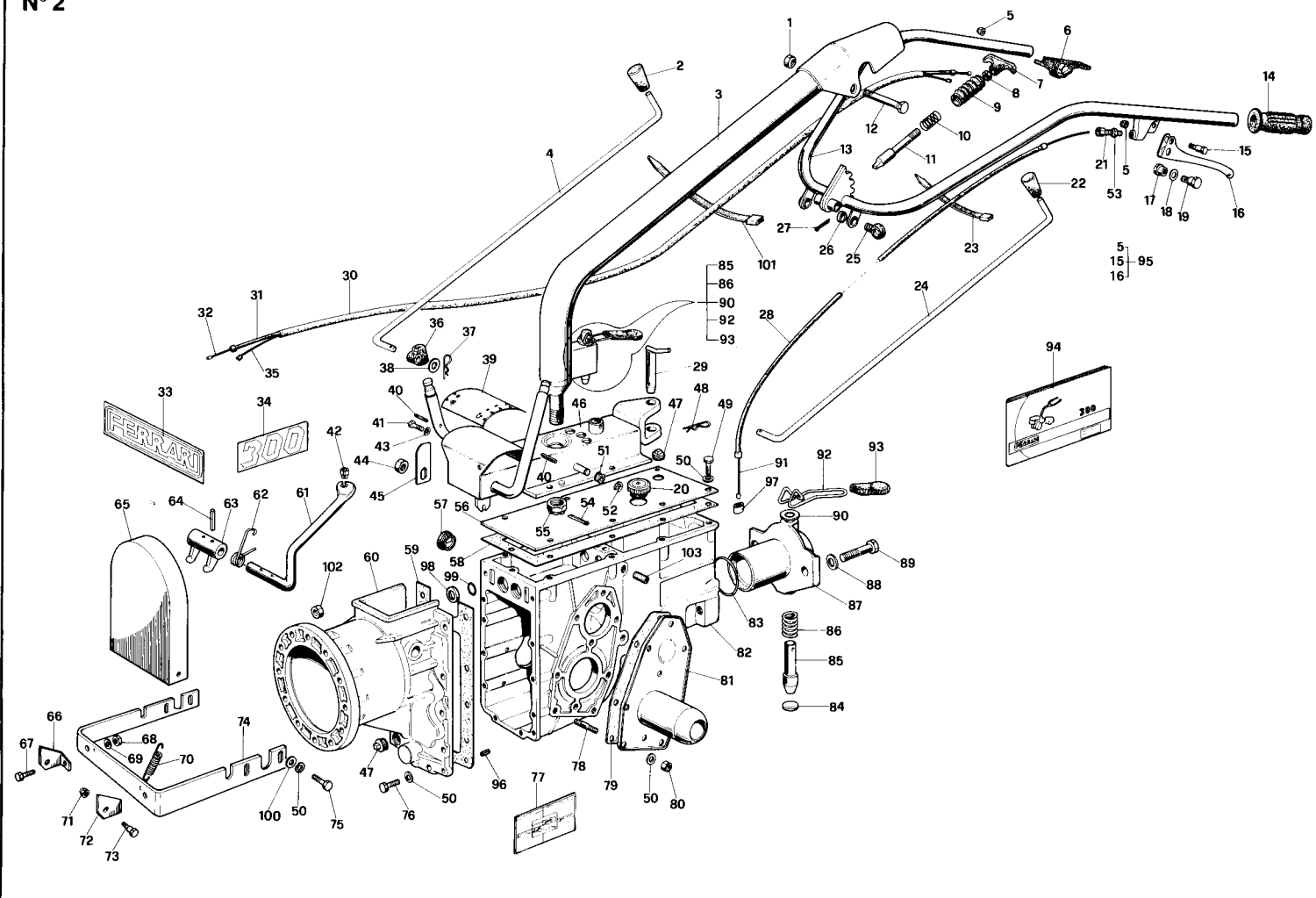
uso e manutenzione
emploi et entretien
use and maintenance
Bedienung und wartung

catalogo ricambi
catalogue pièces de rechange
spare parts catalogue
ersatzteilkatalog



FERRARI

300



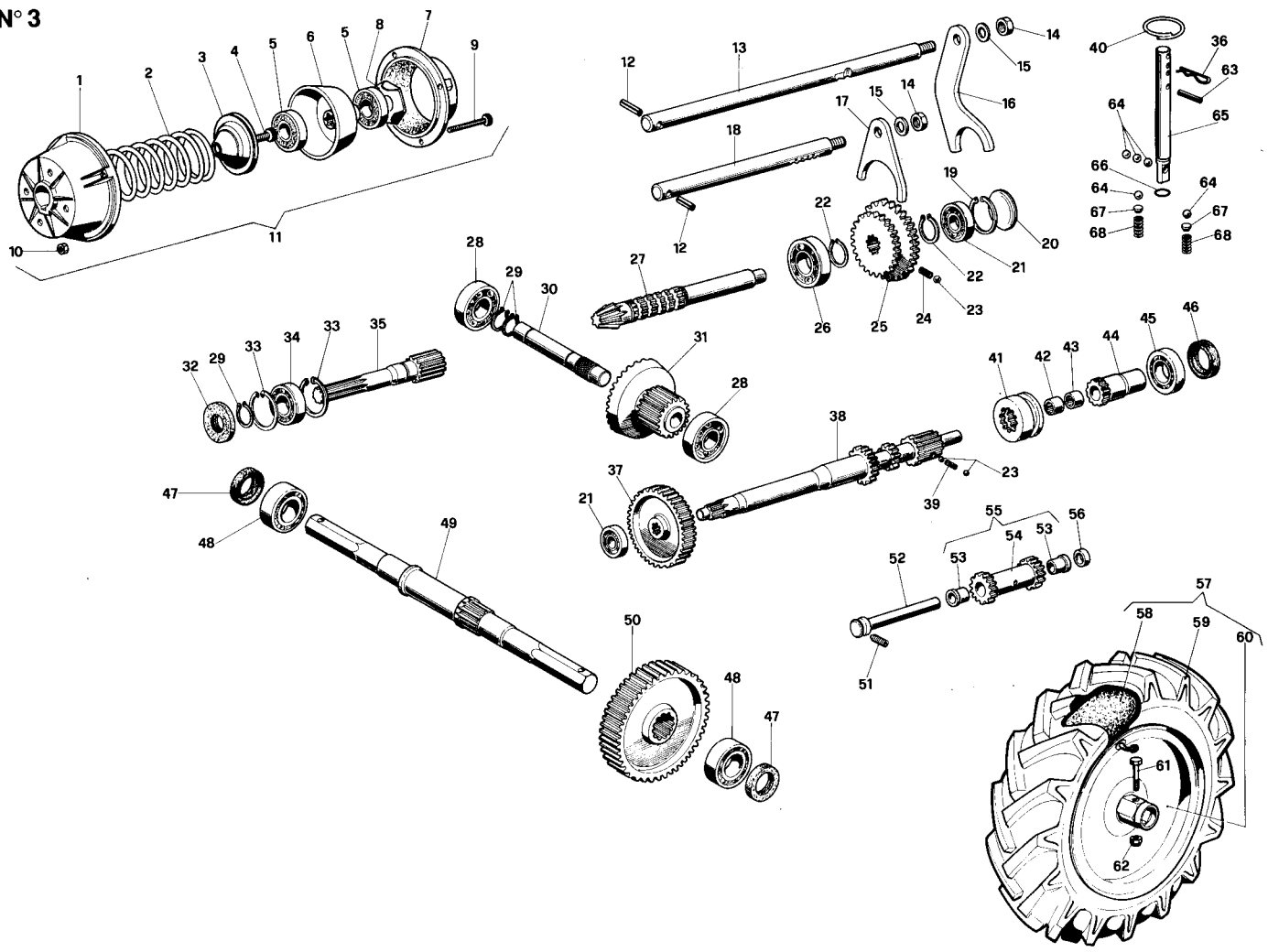
1	81.4732.000	25	49.1676.032	48	85.1486.000	72	30.0050.182	95	82.8044.005
2	83.7534.020	26	84.3930.000	49	86.2555.000	73	22.0025.260	96	85.1225.000
3	30.5017.100	27	81.0549.010	50	84.3643.060	74	30.0050.184	97	49.7025.058
4	30.5017.128	28	85.7271.040	51	30.0016.139	75	86.2555.000	98	48.0896.048
5	81.4547.000	29	80.8034.010	52	80.1030.000	76	86.2670.000	99	80.3179.000
6	82.8035.000	30	25.5800.010	53	81.4569.050	77	30.0000.102	100	84.3685.000
7	83.7554.000	31	85.7137.000	54	81.0626.010	78	83.8084.050	101	81.7660.000
8	81.4627.000	32	85.6156.000	55	81.4890.020	79	48.0918.000	102	81.4575.000
9	30.0002.174	33	85.4074.106	56	48.0915.000	80	81.4581.000	103	86.3105.010 *
10	83.1148.000	34	30.5017.130	57	85.3527.000	81	48.0289.000		
11	30.5017.120	35	82.5460.000	58	48.0916.000	82	30.5009.051 ⊙		
12	86.4067.020	36	81.7279.000	59	48.0917.000	—	30.5009.052 *		
13	30.5017.106	37	85.1355.010	60	30.5001.050	83	80.3209.090		
14	82.8433.000	38	84.3807.040	61	30.5001.101	84	85.2613.000		
15	82.8043.050	39	30.5017.122	62	83.1222.050	85	30.5017.124		
16	82.8049.010	40	85.1043.050	63	30.5001.100	86	83.1195.040		
17	85.9015.010	41	86.2159.050 ⊙	64	85.1182.000	87	30.5009.050		
18	84.3801.000	42	85.8540.000	65	22.0025.248	88	84.3927.050		
19	85.9015.000	43	84.3605.010 ⊙	66	30.0050.183	89	86.4177.050 = M14 x 30		
20	85.2699.060	44	81.4689.020 ⊙	67	86.2097.010	90	84.3870.000		
21	85.8021.000	45	30.5017.117 ⊙	68	81.4546.000	91	85.6338.000		
22	83.7534.010	46	30.5017.110 ⊙	69	84.3570.000	92	30.5017.125		
23	81.7640.000	—	30.5017.133*	70	22.0025.915	93	82.8468.050		
24	30.5017.127	47	85.2597.000	71	81.4548.000	94	90.7170.069		

⊙ Fino a N° matricola 1000

* Da N° matricola 1000

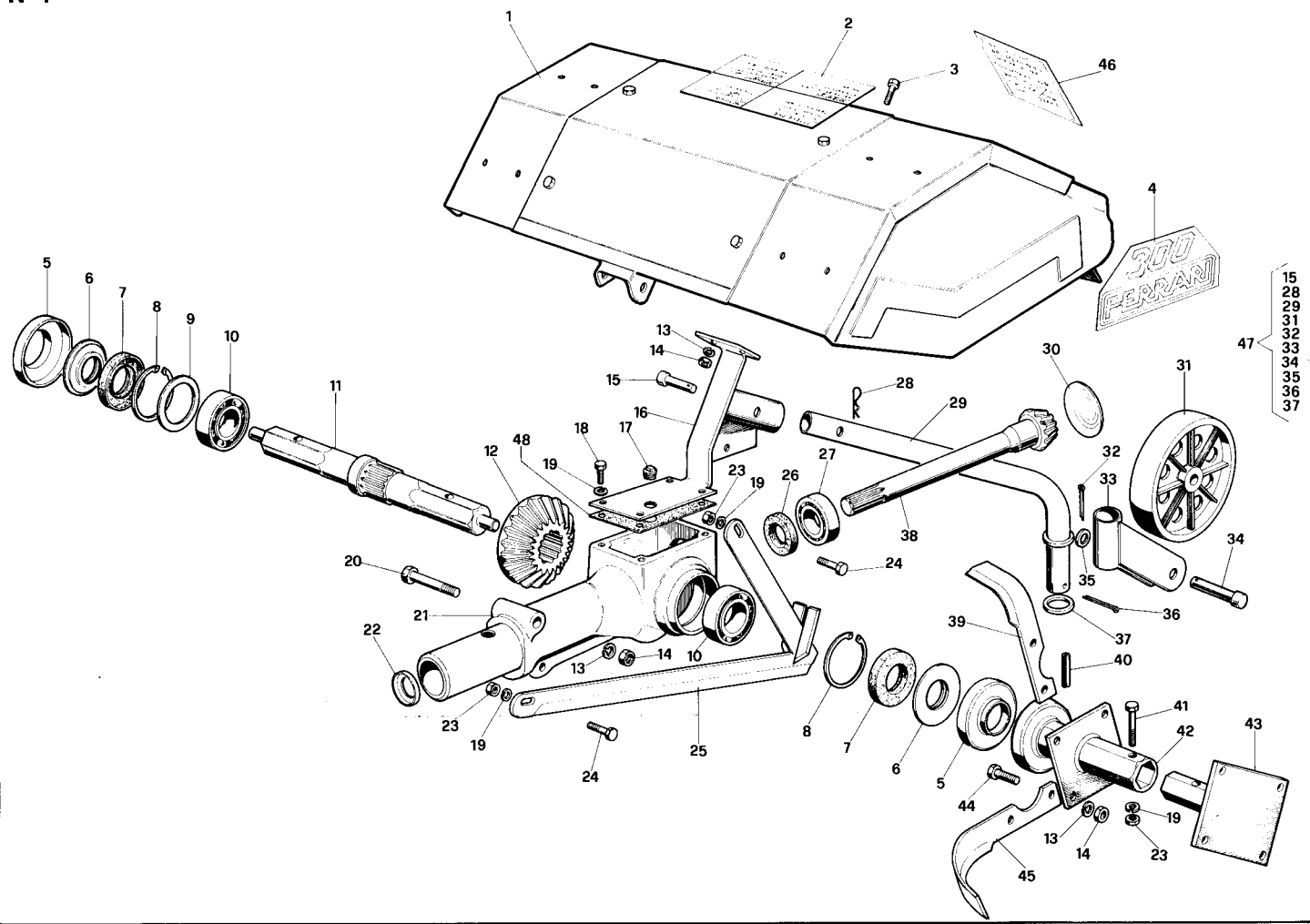


N° 3



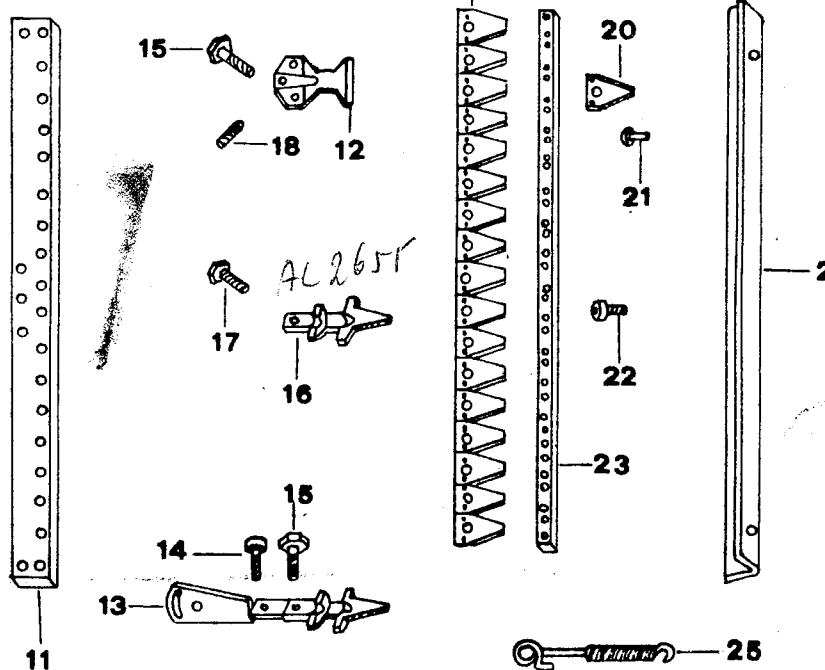
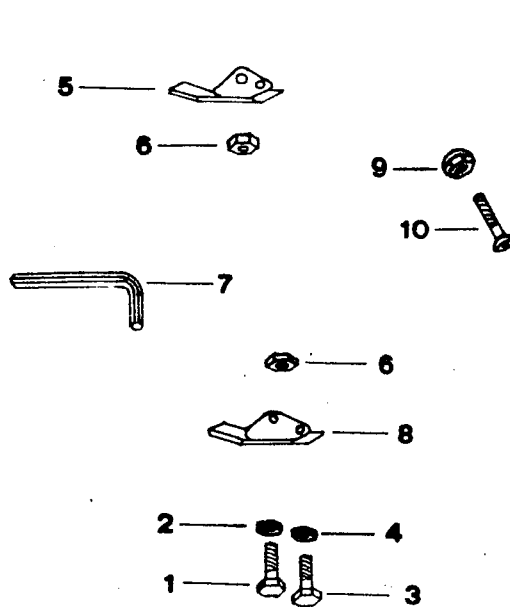
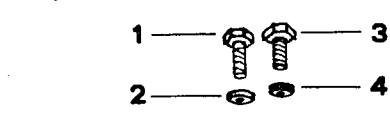
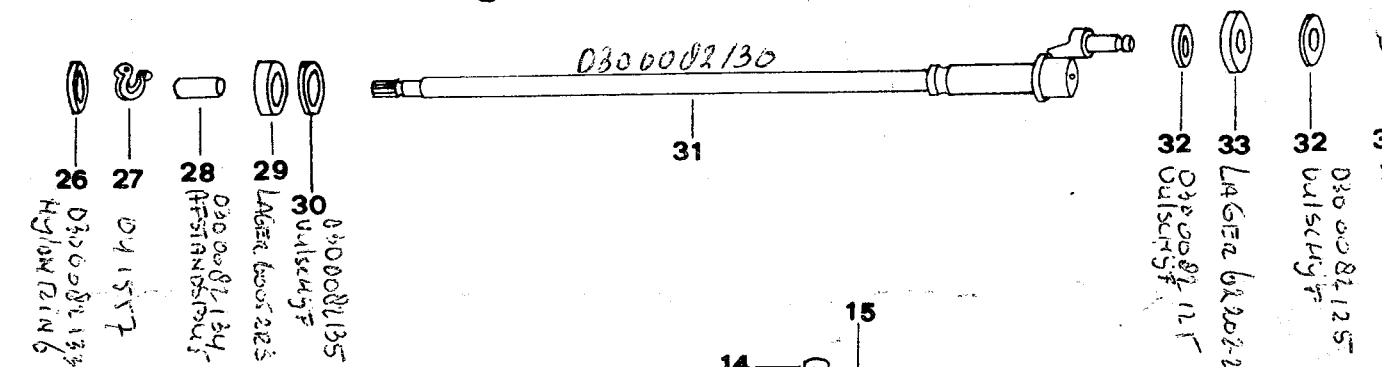
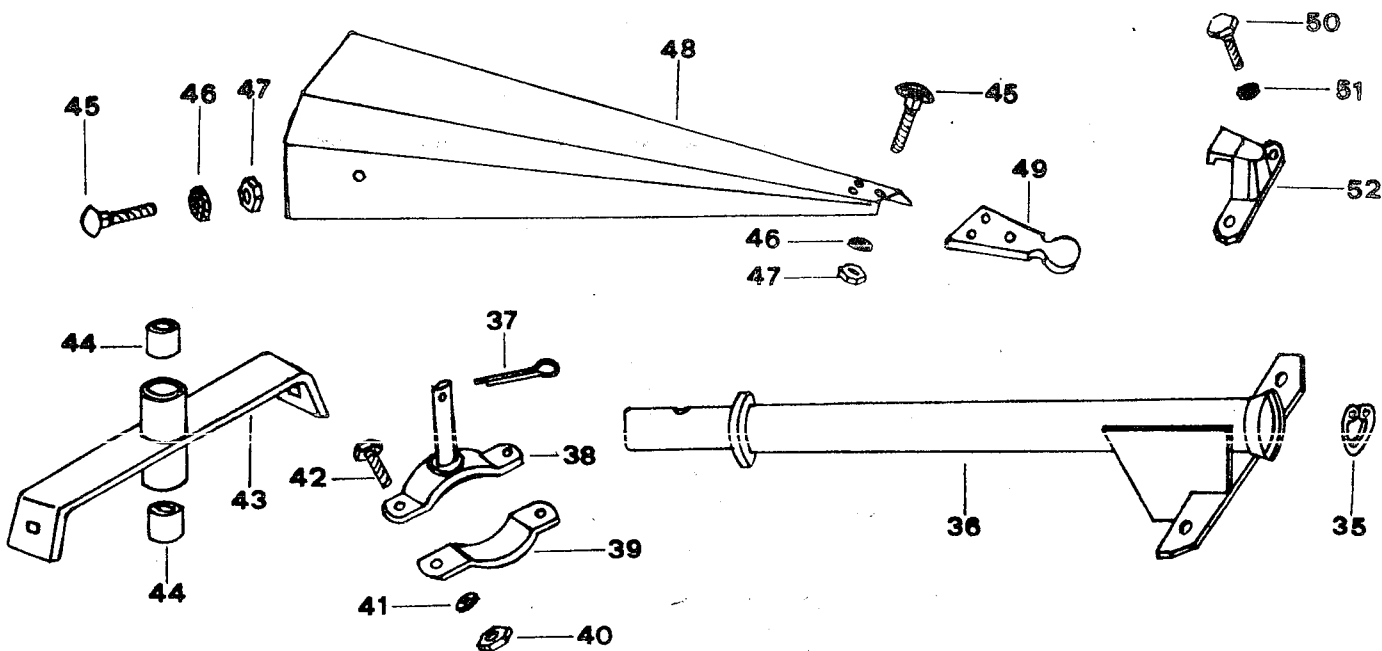
1	48.0110.000	22	80.1138.000	—	30.5009.119 *	63	85.1156.000 *
2	83.1381.040	23	84.7413.000 ⊙	42	81.2532.000	64	84.7432.000 *
3	48.0055.061	24	83.1001.050 ⊙	43	81.2532.050	65	30.5009.122 *
4	86.2680.000	25	30.5009.105 ⊙	44	30.5009.104	66	80.3056.000 *
5	81.2586.000	—	30.5009.118 *	45	81.2698.000	67	47.1560.048 *
6	48.0071.001	26	81.2637.000	46	80.2097.050	68	83.1014.075 *
7	48.0115.000	27	30.5009.106 ⊙	47	80.2095.005		
8	48.0059.061	—	30.5009.116 *	48	81.2707.000		
9	86.2369.050	28	81.2594.000	49	48.0912.000		
10	81.4546.000	29	80.1127.000	50	30.5009.108		
11	48.0051.099	30	30.5009.109	51	86.2593.050		
12	85.1254.000	31	30.5009.107	52	48.0863.042		
13	30.5009.115 ⊙	32	80.2056.080 <i>17-40-7</i>	53	80.4024.000		
—	30.5009.121 *	33	80.1300.000	54	30.5009.111		
14	81.4628.000	34	81.2588.000	55	30.5009.110		
15	84.3775.050	35	30.5009.100	56	48.0873.076		
16	30.5009.113	36	85.1486.000 *	57	90.1011.150		
17	30.5009.112	37	30.5009.101	58	84.8809.000		
18	30.5009.114 ⊙	38	30.5009.102 ⊙	59	84.8516.000		
—	30.5009.120 *	—	30.5009.117 *	60	90.1011.151		
19	80.1246.000	39	83.1001.063 ⊙	61	86.2785.000		
20	85.2701.040	40	48.0895.048 *	62	81.4585.000		
21	81.2523.000	41	30.5009.103 ⊙				

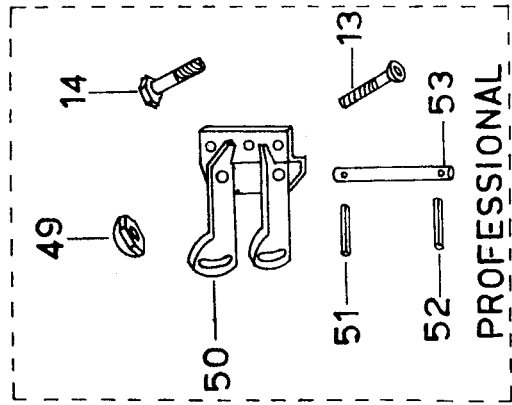
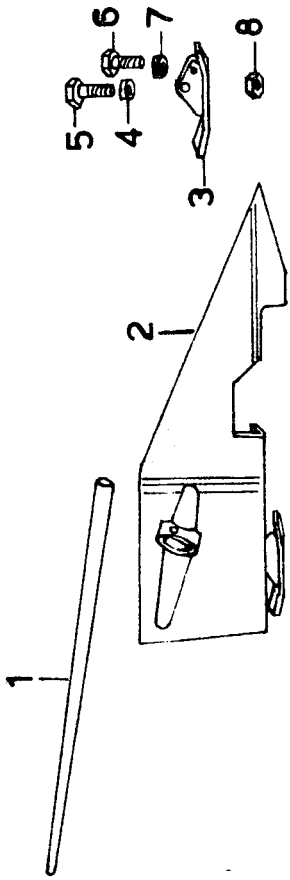
⊙ Fino a N° matricola 1000
* Da N° matricola 1000



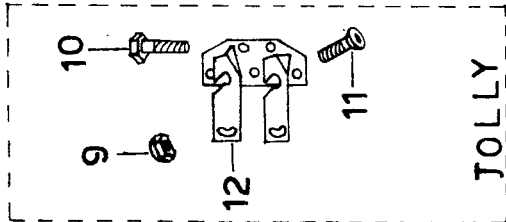
1	30.5064.106	17	85.2597.000	34	83.5678.050
2	01.0001.485	18	86.2546.000	35	84.3993.000
3	86.3254.000	19	86.3643.050	36	81.0626.010
4	30.5064.116	20	86.3566.000	37	49.6419.000
5	48.6378.061	21	30.5064.050	38	30.5064.117
6	48.6389.098	22	30.5064.101	39	30.5064.114
7	80.2100.050	23	81.4581.000	40	85.1362.000
8	80.1368.000	24	86.2670.000	41	86.2847.000
9	85.0100.000	25	30.0063.103	42	30.5064.102
—	85.0100.010	26	80.2076.000	43	30.5064.103
10	81.2707.000	27	81.2637.000	44	86.3328.000
11	30.0063.205	28	85.1357.000	45	30.5064.115
12	30.0063.213	29	49.6423.000	46	85.4002.020
13	84.3755.000	30	85.2766.000	47	49.6425.000
14	81.4644.000	31	49.6422.000	48	48.6373.072
15	80.8015.000	32	85.1190.000		
16	30.5064.105	33	49.6424.000		

OFFICINE MECCANICHE FERRARI FERNANDO S.p.A.
 Via Valbrina, 19 - 42045 LUZZARA (RE) ITALIA
 Tel. (0522) 837690 - Telex 530144 FERMAC I
 Telefax 0522/835343





PROFESSIONAL



JOLLY

